

# GENPASS – PASSWORD GENERATOR

## USER'S GUIDE

### Chapter I.

### Installation

This program does not need installation. Simply unzip and run.

### Chapter II.

### Components

This program is a single-form windows application. The components are shown on figure 1:

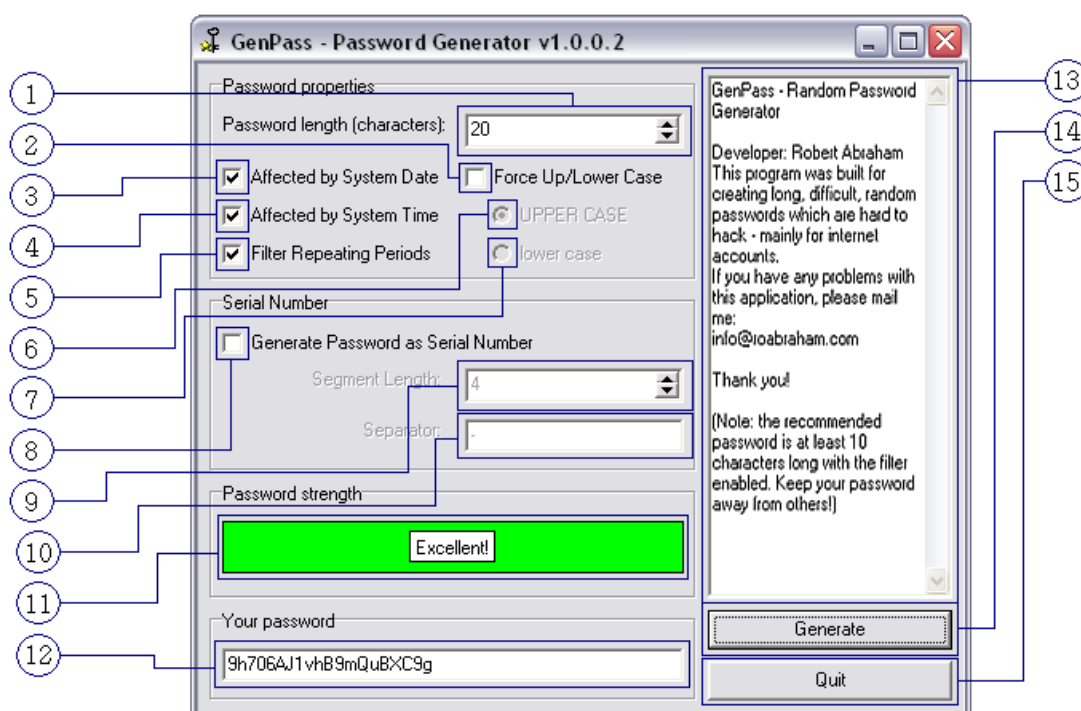


Figure 1. Components

The description of these components can be found in the following table (table 1):

ID	Component	Description
1	Password Length	Determines how many characters the password will contain.
2	Upper/Lower Case	Forces the program to use only upper/lower case characters.
3	System Date Switch	Allows the system date to take effect in the generated password.
4	System Time Switch	Allows the system time to take effect in the generated password.
5	Filter Switch	Allows the program trying to replace the repeating characters to make the password stronger.
6	Upper Case Switch	Forces the program to use only upper case characters.

ID	Component	Description
7	Lower Case Switch	Forces the program to use only lower case characters.
8	Serial Number Switch	Determines whether the password is in serial number format or not.
9	Segment Length	Determines the length of the password's segments.
10	Separator	This character separates the segments of the password.
11	Password Strength Meter	This is a graphical presentation of the generated password's strength.
12	Your password	This is the place where the password will be presented.
13	Information	Some information about the program is presented in this component.
14	Generate Button	Starts generating the password.
15	Quit Button	Exit from the program.

Table 1: Components by ID

## Chapter III.

## Usage

This is a single-form application for Microsoft Windows and is very easy to use. To generate a password follow the steps bellow:

1. After unzipping, double-click on "GenPass.exe";
2. Set the length of your password: this can be done by the component with ID #1;
3. (Optional) If you want to generate serial numbers, check the component with ID #8 (Note that the serial number is using only capitals). Set the length of the segments (ID #9) and the separating character (ID #10) or accept the default values. Change the full length of your password [serial number] if you need it (the default length is 16 characters long);
4. Click on the "Generate" button (ID #14);
5. If you finished copying your password, click on the "Quit" button to close the program.

You can always check the strength of the generated password in the "Password strength" area (ID #11). If your password is not strong enough, you can re-generate it by clicking on the "Generate" button again. You can repeat this anytime you want.

You can also force the program to use capitals or small letters by checking the component with ID #2 then selecting between "UPPER CASE" and "lower case" radio-buttons (ID #6 and ID #7). You can also disable the system date/time effect and/or the filter by disabling the components with ID #3, #4 and #5. Please note after this the program may generate much weaker passwords, so it is **strongly recommended to keep these features enabled!**

Changes you made on the form are saved to `config.xml` file on closing the application. If you want to do a so-called factory reset, simply delete this file.

## Chapter IV.

## About

The main role of this application is generating random passwords and/or serial numbers for Internet accounts and/or software products to make these materials safe and hard to hack. The passwords are generated using random characters with no tracking methods, so you can use this program safely.

Developer:

**Robert Abraham**

Contact:

[info@roabraham.com](mailto:info@roabraham.com)

If you have any problems with this application, please contact me.

**Chapter V.****System Requirements**

To use this application you must have Microsoft Windows XP SP3 or later. The application may work on other Windows-like systems (such as Wine) as well but there is no guarantee for that.

**Chapter VI.****BSD License**

**©2024 Robert Abraham. All rights reserved.**

Redistribution and use in source and binary forms, with or without modification, are permitted provided that the following conditions are met:

- Redistributions of source code must retain the above copyright notice, this list of conditions and the following disclaimer.
- Redistributions in binary form must reproduce the above copyright notice, this list of conditions and the following disclaimer in the documentation and/or other materials provided with the distribution.

THIS SOFTWARE IS PROVIDED BY THE AUTHOR AND CONTRIBUTORS ``AS IS" AND ANY EXPRESS OR IMPLIED WARRANTIES, INCLUDING, BUT NOT LIMITED TO, THE IMPLIED WARRANTIES OF MERCHANTABILITY AND FITNESS FOR A PARTICULAR PURPOSE ARE DISCLAIMED. IN NO EVENT SHALL THE AUTHOR OR CONTRIBUTORS BE LIABLE FOR ANY DIRECT, INDIRECT, INCIDENTAL, SPECIAL, EXEMPLARY, OR CONSEQUENTIAL DAMAGES (INCLUDING, BUT NOT LIMITED TO, PROCUREMENT OF SUBSTITUTE GOODS OR SERVICES; LOSS OF USE, DATA, OR PROFITS; OR BUSINESS INTERRUPTION) HOWEVER CAUSED AND ON ANY THEORY OF LIABILITY, WHETHER IN CONTRACT, STRICT LIABILITY, OR TORT (INCLUDING NEGLIGENCE OR OTHERWISE) ARISING IN ANY WAY OUT OF THE USE OF THIS SOFTWARE, EVEN IF ADVISED OF THE POSSIBILITY OF SUCH DAMAGE.