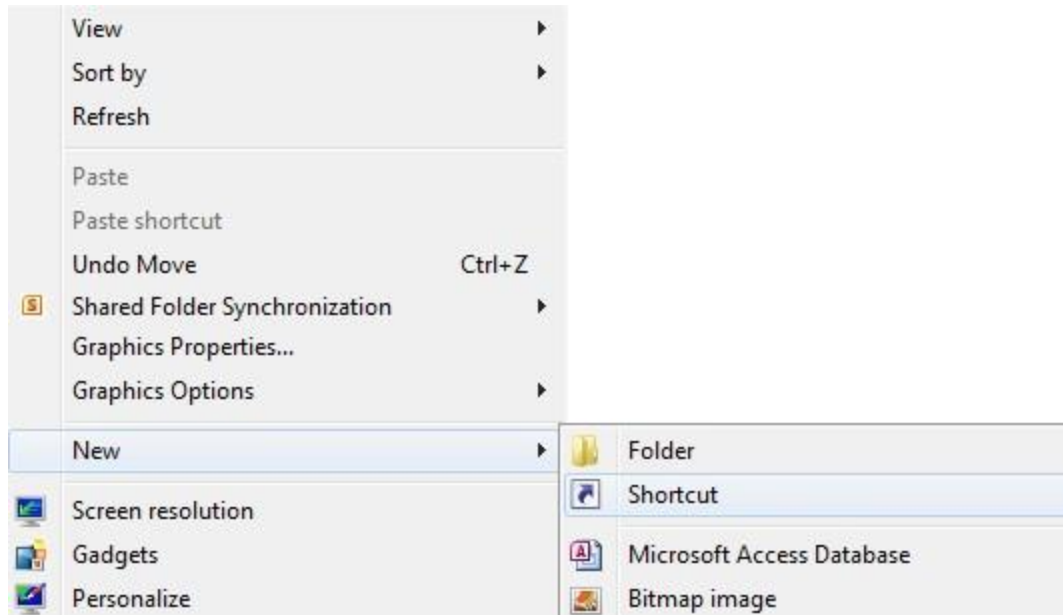
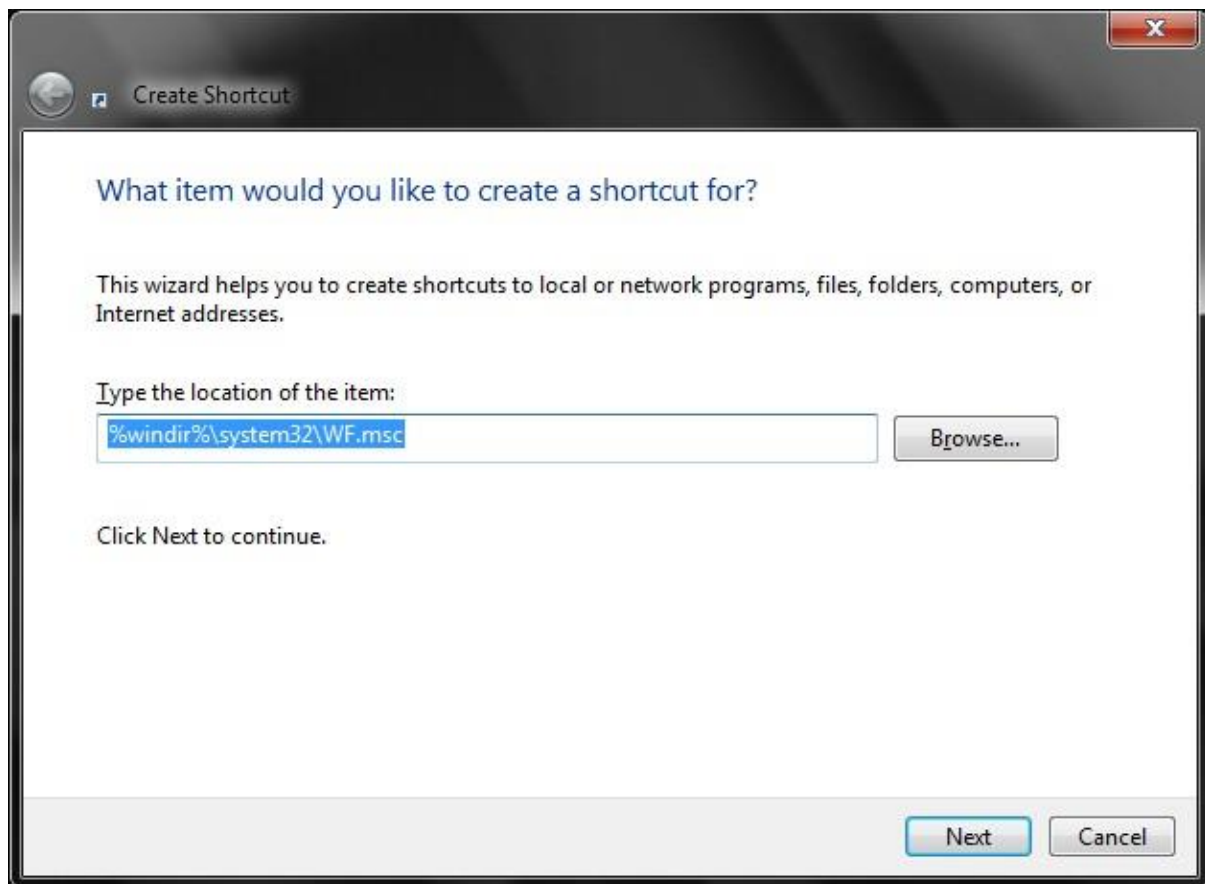
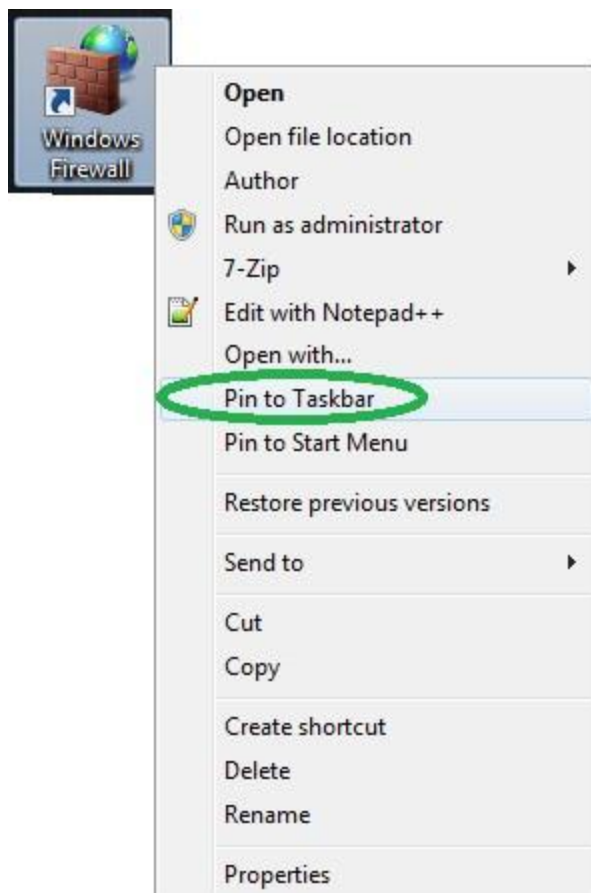


Windows Firewall!

Step 1: Create Firewall Shortcut!

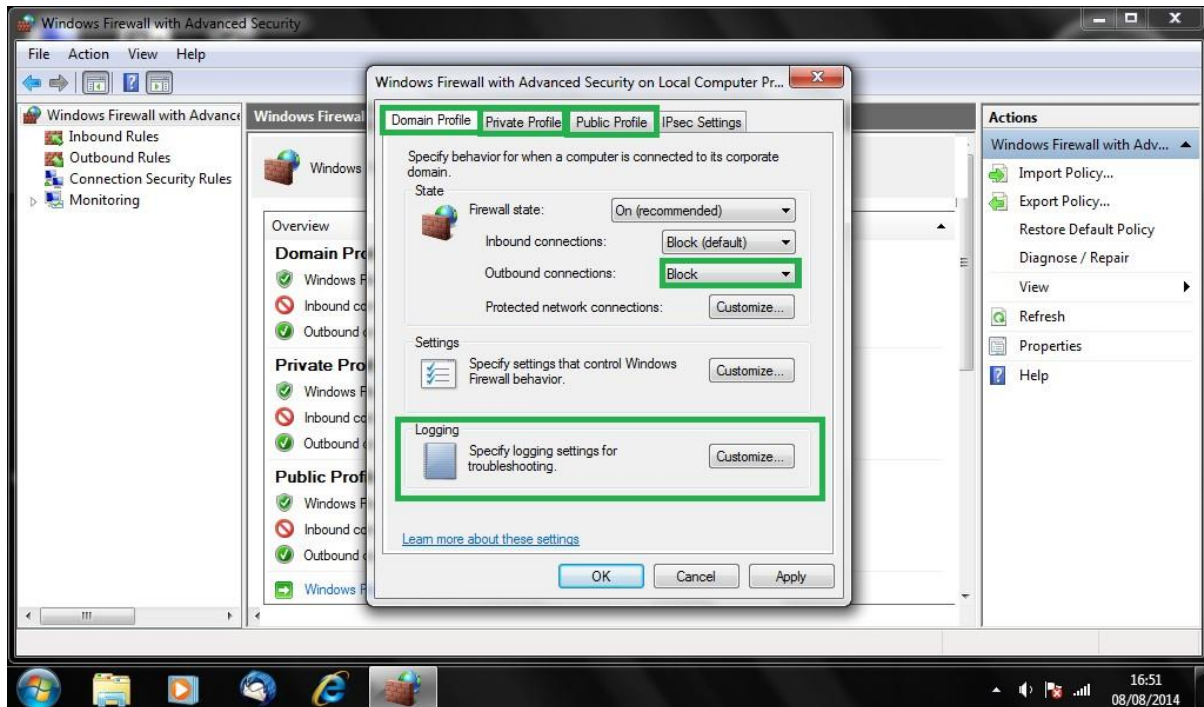




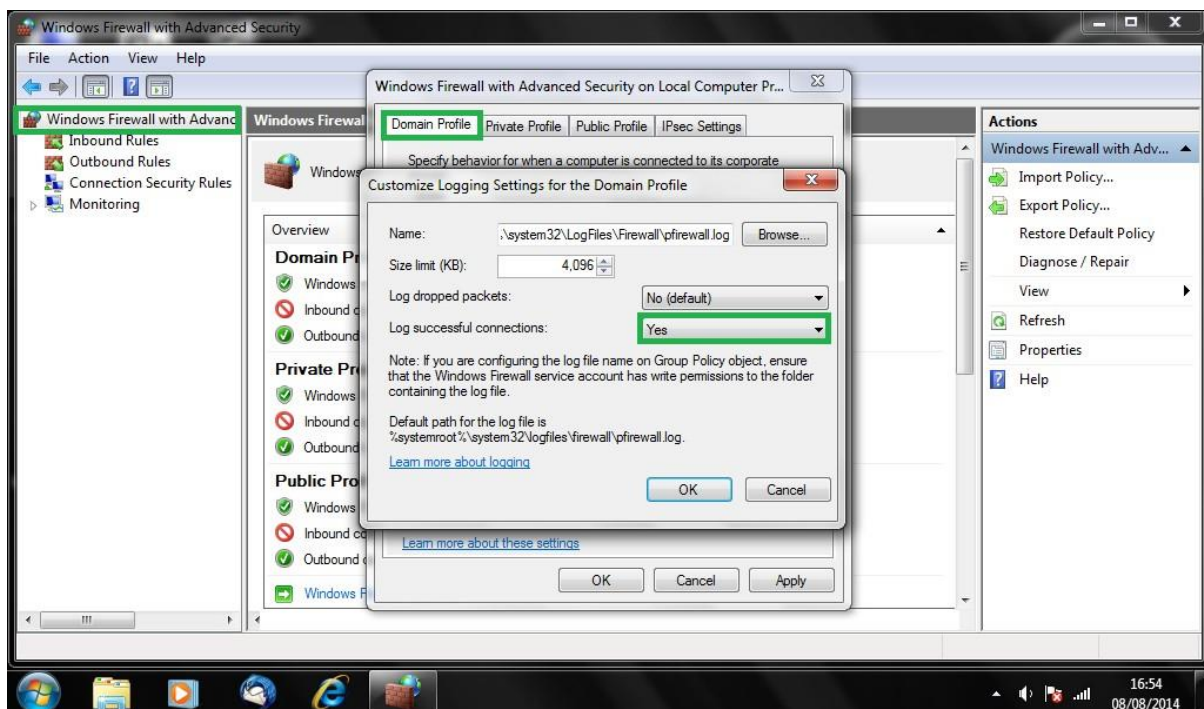


You can also pin it to your **Taskbar** for faster access.

Step 2: Enable Two Way Firewall!

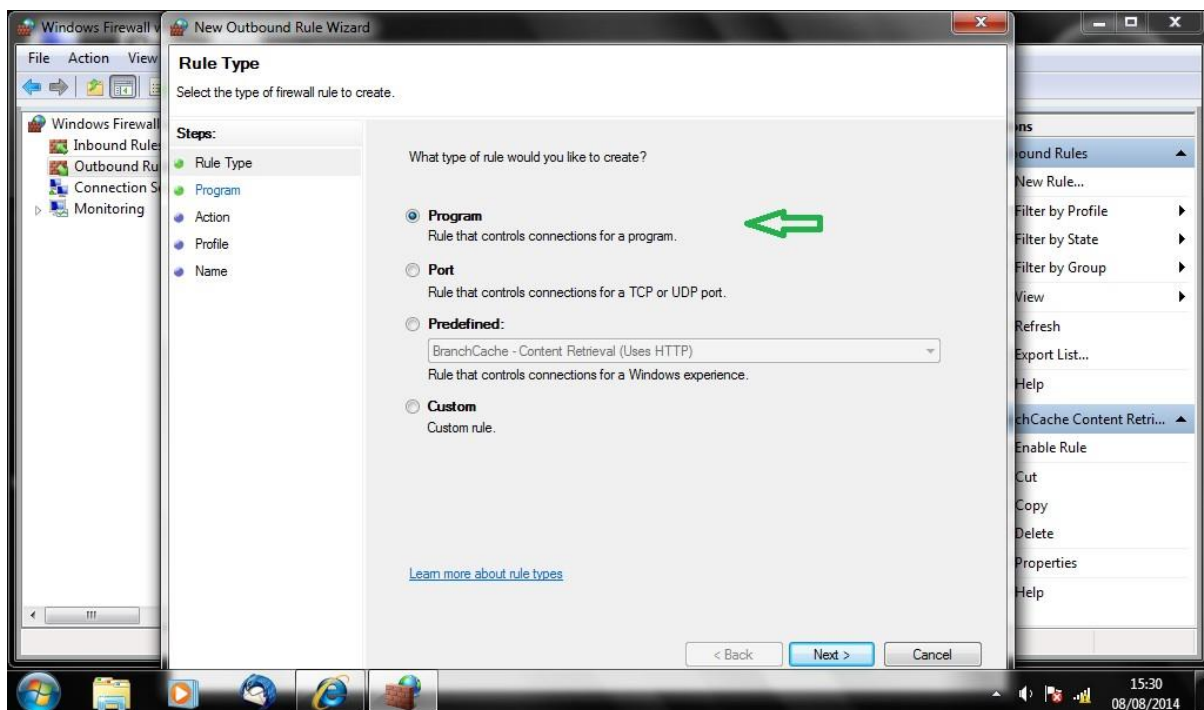
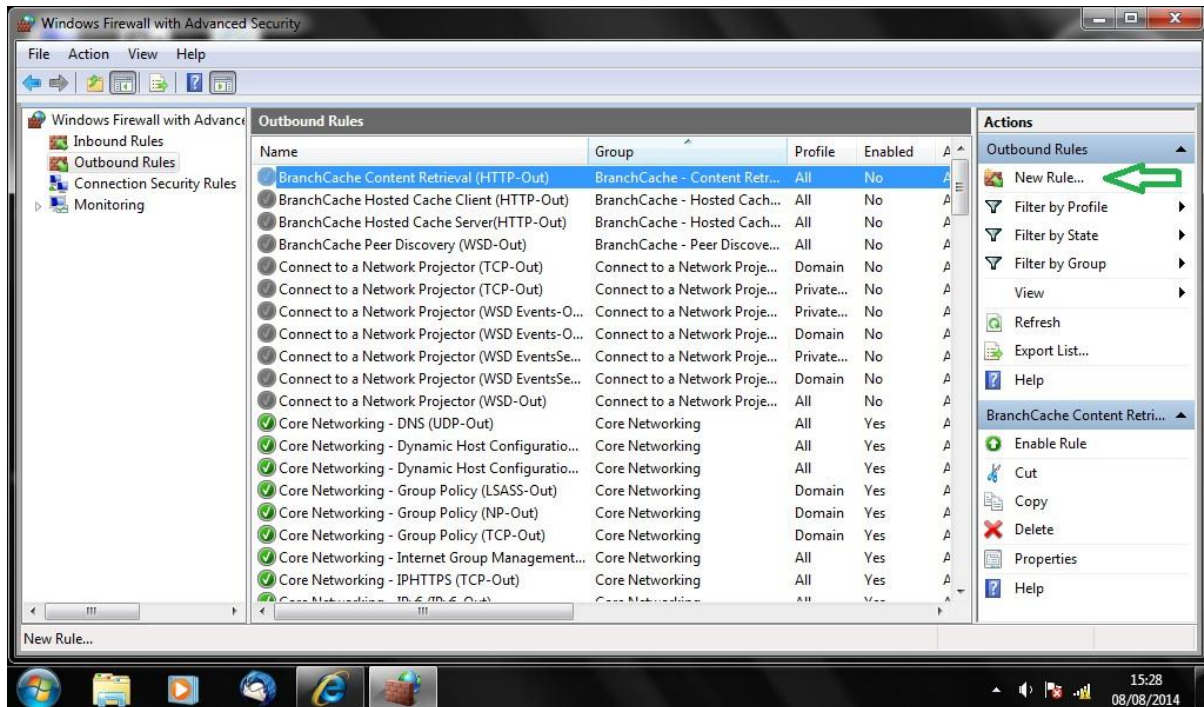


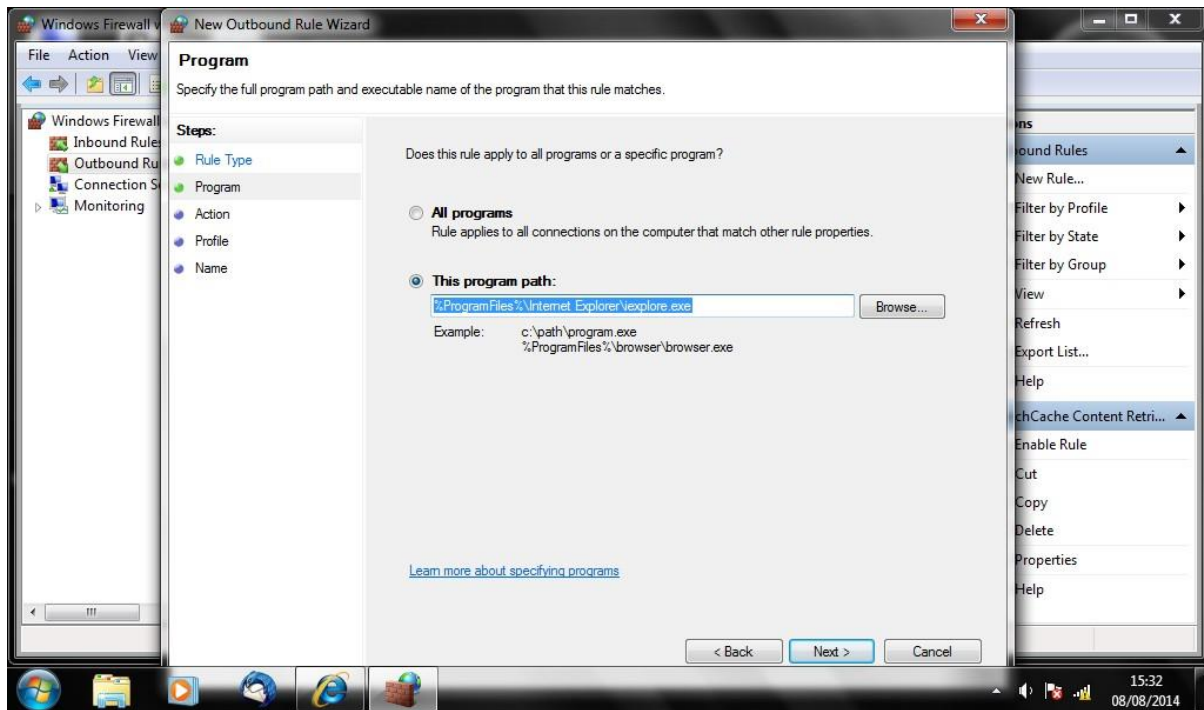
You need to add same **settings** for each **Profile** Tab!



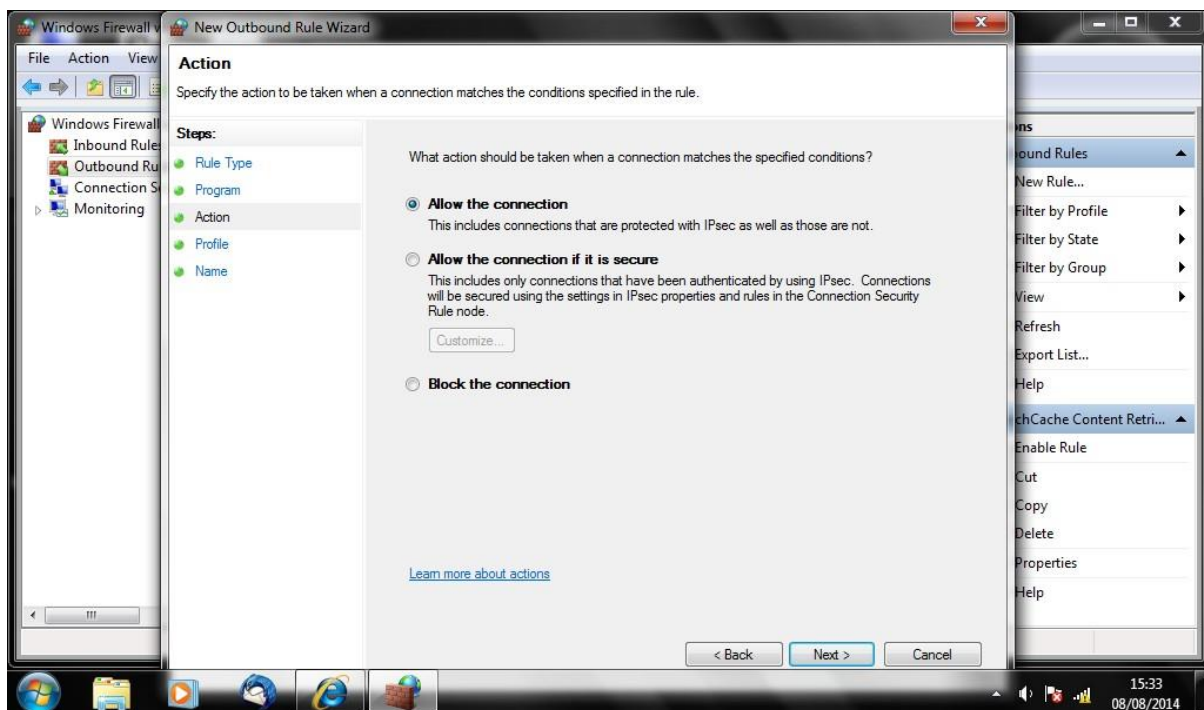
Step 3: Add new Firewall Rules !

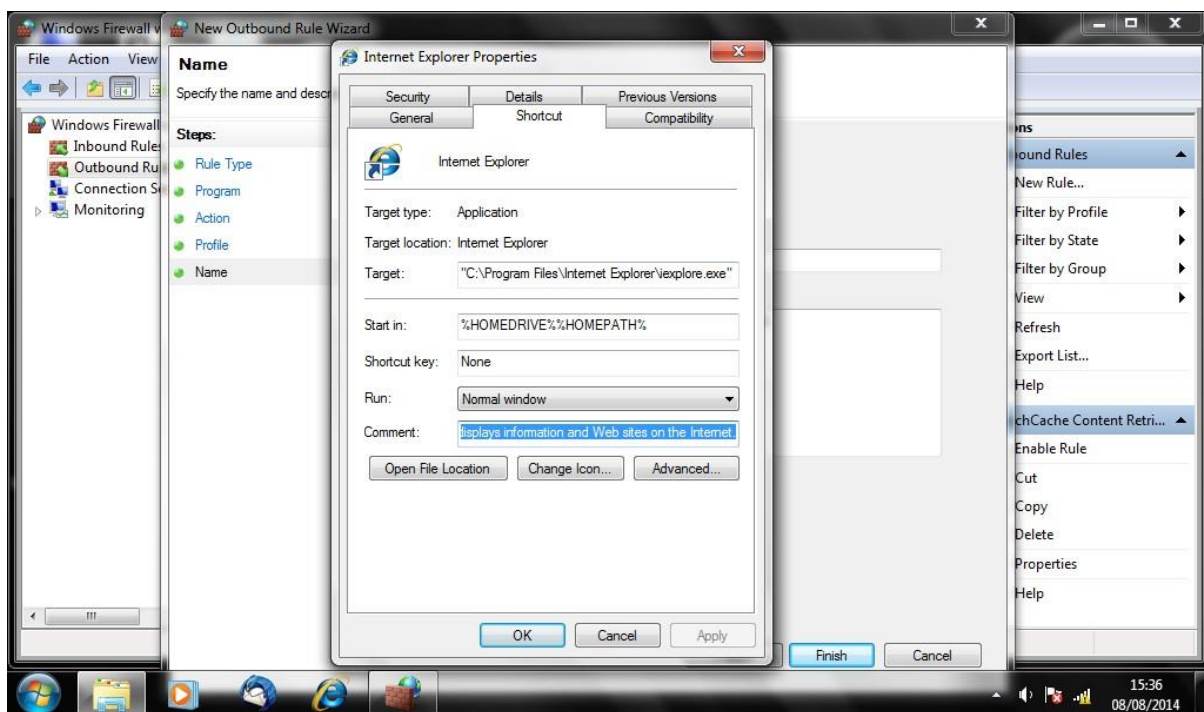
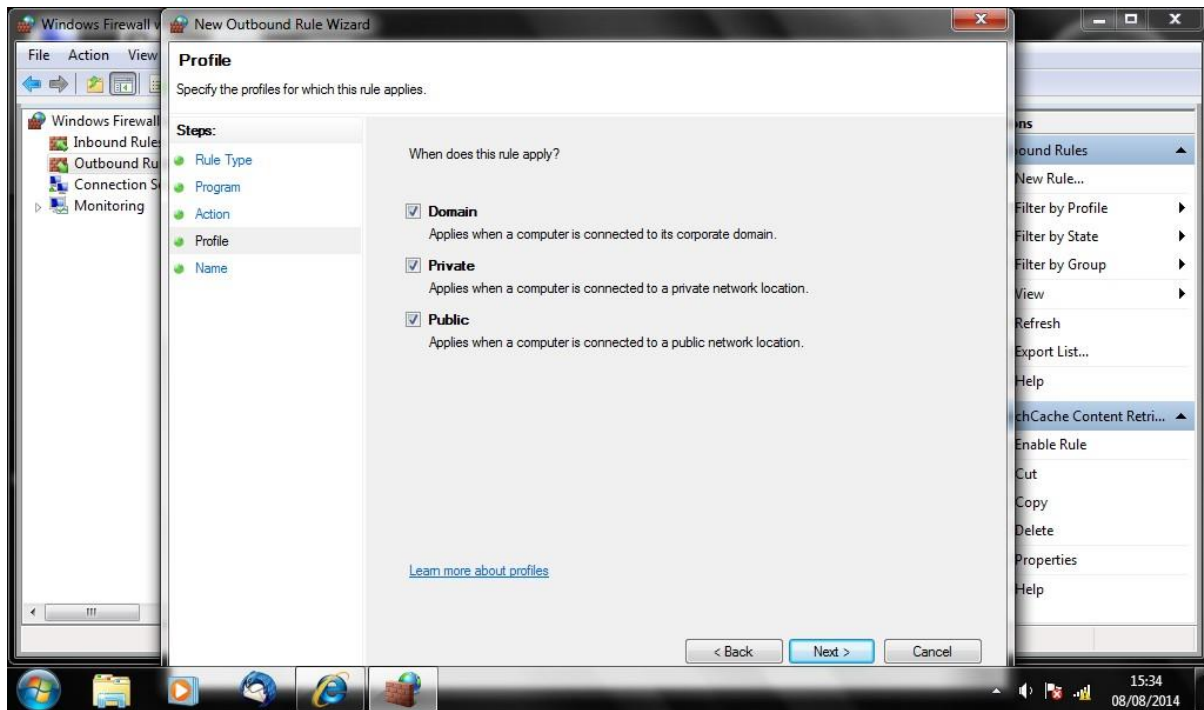
Use **Windows Firewall with Advanced Security MMC** and use the **user interface** Each time to add new **application rules**, by using the **New Outbound Rule Wizard**.





Copy and paste the path in the above box!





You can get all **information** from **shortcuts** like **full paths** etc.

